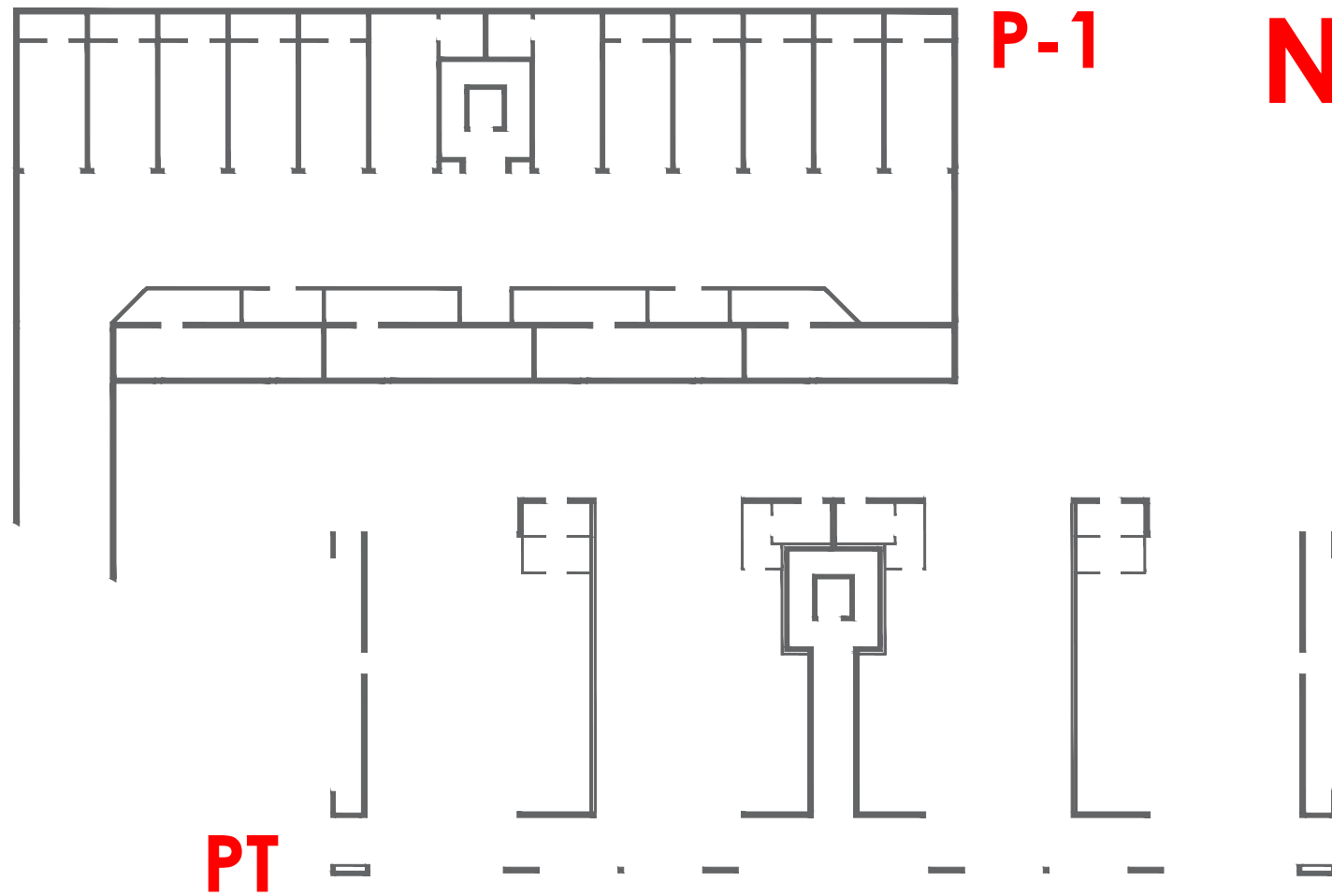


NEG.2 COMMERCIALE - PT

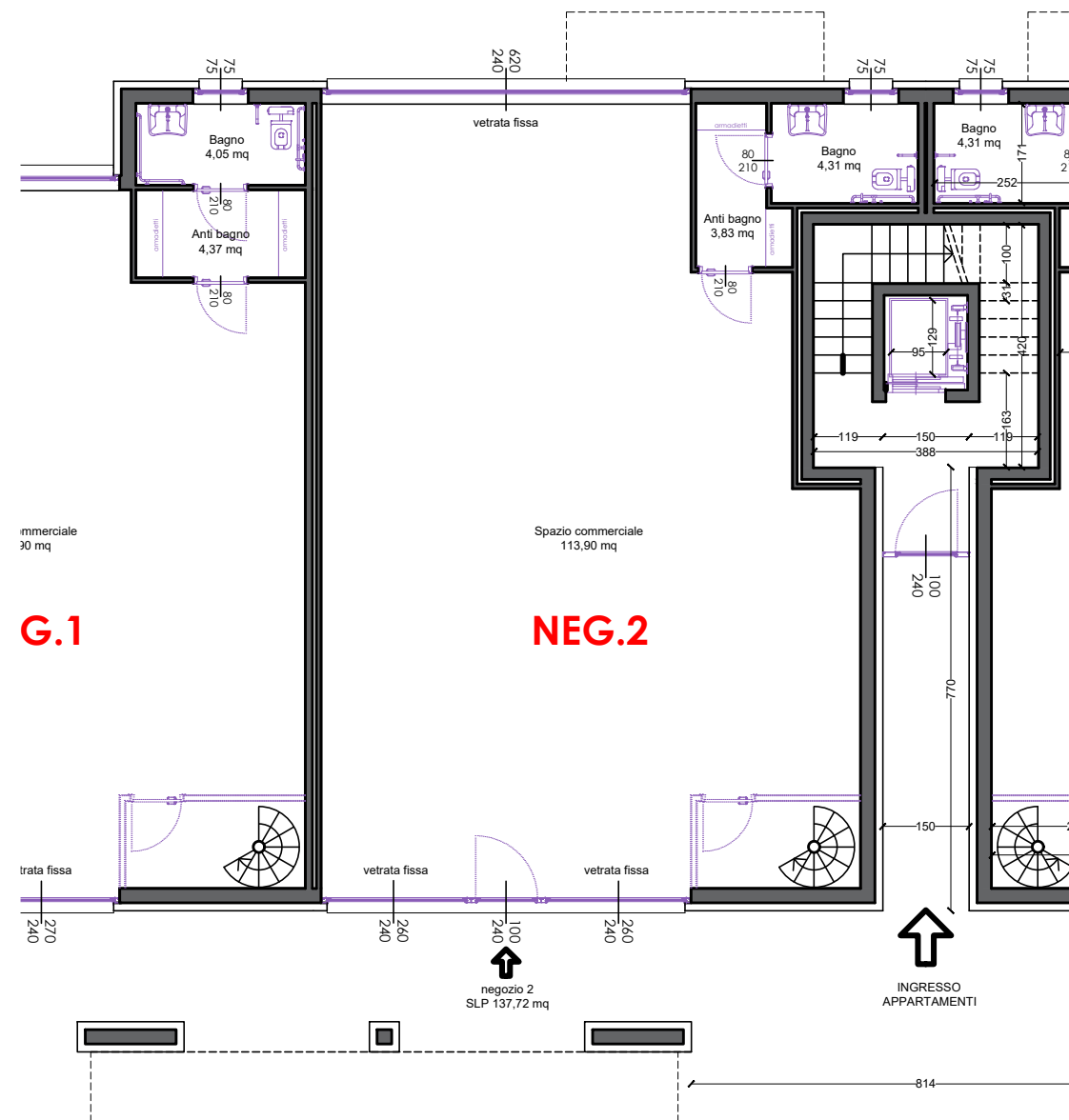


152.42 NO PORTICO 1 NO



via Alcide De Gaspi

NEG.2 COMMERCIALE - PT



LOCALE **S.U. mq**

O1	Spazio commerciale	113.90
O2	Antibagno	3.83
O3	Bagno	4.31
O4	Deposito	8.17
O5	Deposito	20.00

Piazza nuova realizza